

## CURRICULUM VITAE

### Personal information

**Surname:** Mastoraki

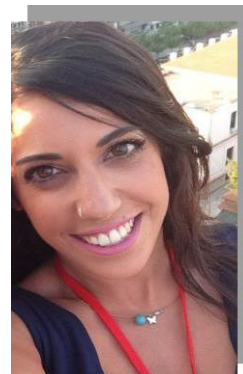
**Name:** Sophia

**Date of birth:** 30/06/1988

**Address:** Str. Makrygianni 5, Zografou, 15772, Athens, Greece

**Contact number:** 0030-2130416641  
0030-6975859816

**E-mail:** sofos07@windowlive.com



### Education

**01/2015-today:** PhD student, Analysis of Circulating Tumor Cells Laboratory, Department of Chemistry, University of Athens, Greece. ([www.actc-lab.chem.uoa.gr/](http://www.actc-lab.chem.uoa.gr/))

Supervisor: E. Lianidou, Ph.D., Professor of Analytical Chemistry-Clinical Chemistry, University of Athens.

**09/2012-10/2014:** MSc student in Clinical Chemistry, Department of Chemistry, University of Athens, Greece. Grade: 9.37/10 (Excellent) (<http://clinical-chemistry.chem.uoa.gr>)

Courses: Clinical Chemistry, Molecular Diagnostics, Modern Biochemical and Biophysical Techniques, Molecular Biology, Molecular Basis of Genetic Diseases, Biostatistics-Chemometrics, Anatomy, Pathophysiology.

**2006-2012:** BSc, Graduation Faculty of Sciences, Department of Chemistry, University of Athens, Greece (4 years scholarship from the "Pitikakis" Foundation). Grade: 6.63/10 (Very Good)

**2006:** Graduated from the High School of Neapolis, Crete. Grade: 19.4/20 (Excellent)

### Projects

#### **MSc student**

**Master Thesis:** "Study and clinical evaluation of *SOX17* and *BRMS1* promoters methylation in breast cancer patients using methylation-sensitive high resolution melting analysis (MS-HRMA)", 2014.

Supervisor: E. Lianidou, Ph.D., Professor of Analytical Chemistry-Clinical Chemistry, University of Athens.

#### **In courses:**

- "Aberrant DNA Methylation by exposure to tobacco smoke in lung cancer", Molecular Diagnostics, 2013.
- "Genetic basis of Multiple Sclerosis", Human Genetics, 2013.

## **BSc student**

**Study:** "Immunohistochemical analysis of ephrin receptors expression in oral squamous cell carcinoma", 2012

Supervisor: S. Theocharis, Associate Professor, First Department of Pathology, Medical School of Athens.

## **Languages**

**Native Language:** Greek

**Other Languages:** English (Certificate of Proficiency in English, University of Michigan), French (DEL F 1er degré).

## **Scientific experience**

**02/2014-06/2014:** Assistant in Laboratory of Analytical Chemistry, Faculty of Chemistry, training of undergraduate students of Faculties of Chemistry and Pharmacy in the subject of "Clinical Chemistry"

**07/2013-10/2013:** Practice in Evaggelismos Hospital, Clinical Chemistry Department

**03/2013-06/2013:** Assistant in Laboratory of Analytical Chemistry, Faculty of Chemistry, training of undergraduate students of Faculty of Biology in the subject of "Analytical Chemistry"

## **Technical-laboratorial experience**

- Very good knowledge of Microsoft Office, Chem Office, MDL Isis Draw, statistical software IBM SPSS 22.0, In silico design of primers and probes for PCR analyses (PrimerPremier 5.0) and MethPrimer.
- Knowledge of handling automatic immunochemical analysts, such as Architect *i2000* (Abbott), Elecsys 2010 (Roche), Liaison (DiaSorin), AxSYM Plus (Abbott), COBAS Integra (Roche), TDx (Abbott).
- Knowledge of Methylation Specific PCR, Real-time PCR (LightCycler Technology), Polymerase Chain Reaction (PCR), Methylation-Sensitive High Resolution Melting Analysis (MS-HRMA), DNA Extraction, Sodium Bisulfite Conversion of DNA, Protein/DNA Electrophoresis, ELISA, Immunohistochemistry, HPLC.

## **Publication**

**Mastoraki S, Chimonidou M, Dimitrakopoulos L, Kounelis S, Malamos N, Georgoulas V, Lianidou E** A rapid and accurate closed-tube Methylation-Sensitive High Resolution Melting Analysis assay for the semi-quantitative determination of SOX17 promoter methylation in clinical samples. Clin Chim Acta. 2015 Feb 27.

## **Oral Presentation**

**Mastoraki S.** DNA methylation biomarkers in cancer, 12-13 Jun. 2015, Athens.

## Poster

**Mastoraki S**, Chimonidou M, Dimitrakopoulos L, Kounelis S, Malamos N, Georgoulas V, Lianidou E. "Development of a closed-tube methylation-sensitive high resolution melting analysis (MS-HRMA) for the semi-quantitative determination of *SOX17* promoter methylation in clinical samples", 2nd International Symposium on Advances in Circulating Tumor Cells (ACTC), Crete.

## Conferences

**06/2015**: Masterclass on Tumor Biomarkers, Athens

**05/2015**: Masterclass on Immuno Oncology, Athens

**11/2014**: 12th Panhellenic Conference on Clinical Chemistry, Greece

**10/2014**: 2nd International Symposium on Advances in Circulating Tumor Cells (ACTC), Crete (<http://www.actc-lab.chem.uoa.gr/>)

**09/2014**: Hereditary Cancer Syndromes, Athens

**04/2014**: INsPiRE International Workshop on: Oncogenic Pathways and Antitumor Responses, Athens

**10/2013**: 12th Symposium on New Molecules in Cancer Therapeutics, Greece

**2/2013-6/2013**: Modern Clinical Laboratory, Athens

**4/2013**: 19<sup>th</sup> Panhellenic Conference on Clinical Oncology, Greece

**10/2012**: 10th Panhellenic Conference on Clinical Chemistry, Greece

**22-24/10/2009**: «Modern Clinical Laboratory», Department of Microbiology/ Department of Hygiene Epidemiology and Medical Statistics, Faculty of Medicine, Athens

**16-19/10/2008**: 16<sup>th</sup> Balkan conference of clinical chemistry, Balkan Clinical Laboratory Federation, Athens

**7-9/12/2007**: 59<sup>th</sup> National Conference of Biochemistry and Molecular Biology, Hellenic Society of Biochemistry and Molecular Biology Athens

## References

**Evi S. Lianidou**. Professor of Analytical Chemistry–Clinical Chemistry, Laboratory of Analytical Chemistry, Analysis of Circulating Tumor Cells (ACTC) Lab, Dept of Chemistry, University of Athens, Athens, Greece, email: [lianidou@chem.uoa.gr](mailto:lianidou@chem.uoa.gr)

**Constantinos A. Demopoulos**. Professor of Biochemistry, Laboratory of Biochemistry, Dept of Chemistry, University of Athens, Athens, Greece, email: [demopoulos@chem.uoa.gr](mailto:demopoulos@chem.uoa.gr)

**Sofia Ioannidou**. Head of Clinical Chemistry Dept at Evaggelismos Hospital, Athens, Greece.